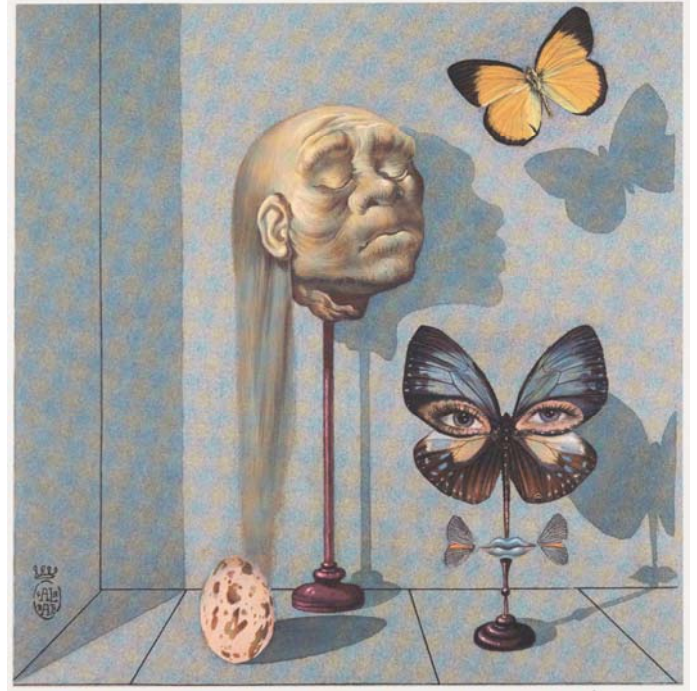


 Teaching suggestions

If students are not familiar with Surrealism, it could be helpful to analyse the artwork before reading the report.

1. Ask students what they notice and what seems strange or dreamlike.
2. Explore the features of Surrealism that will be described in the report:
 - juxtaposition (e.g. the butterflies and egg and face do not belong together in a room; a head on a stand is odd together etc)
 - giving unreal qualities to common objects (e.g. eyes on the butterfly, lips without a face and attached to butterflies, an egg standing up on its own)
 - images of decay and violence (e.g. decay - the face of the old man/ dead person).



Book cover 'La Limite', S. Dali, 1951.

CC0. The Metropolitan Museum of Art, New York, www.metmuseum.org.

 Answers

Identify style / movement

Surrealism is a 20th Century art movement that explored the power of the unconscious and irrational mind. Surrealism was a movement in Visual Arts as well as literature, film and theatre.

Description history and influences

Surrealism began with contemporary art movements in Paris during World War I (1914-1918), including Dada-ism. Surrealist artists included Guillaume Apollinaire, Andre Breton, Max Ernst and Salvador Dali. Surrealism was a significant artistic and intellectual movement through most of the twentieth century.

features

Surrealist artworks often show everyday objects in illogical, dreamlike and bizarre ways. The imagery can be disturbing and surprising. This can involve juxtaposition (placing together) of objects that do not usually go together (such as lips and butterflies in the Dali image on this page), giving unreal qualities to common objects (such as a butterfly with human eyes) as well as images of decay and violence. Surrealist images are designed to inspire the imagination and to reveal the madness of the modern world.

significance

Surrealism was one of the most influential art movements of the twentieth century. The influence of Surrealism is still found in postmodern and contemporary art styles. In fact, any art that explores imagination can be found to be influenced by Surrealism.

Report on an art movement: Surrealism

How to refer to artist names

The first time you write about an artist, use the person's first name and surname e.g. Salvador Dali. After that use the surname only e.g. Dali.



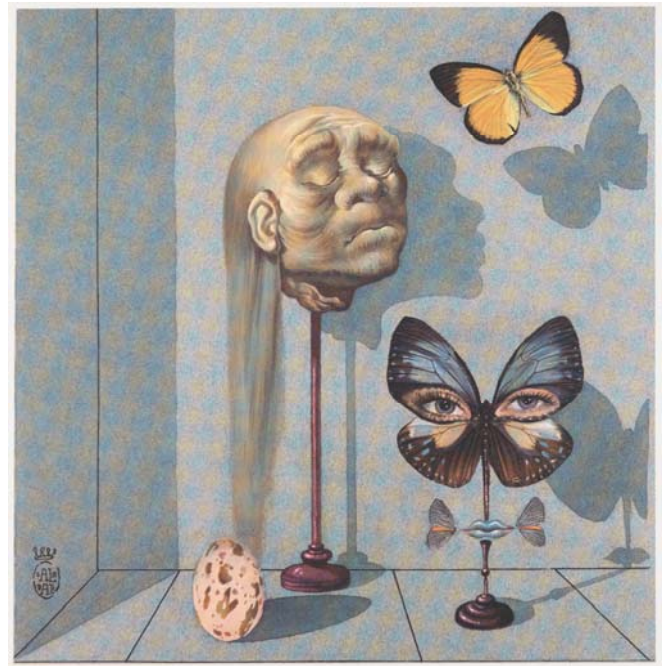
When to use capital letters

Use capital letters for the start of sentences. Also use capital letters for the names of:

- art movements (e.g. Surrealism)
- artist names
- places
- important named events (e.g. World War I).



This page shows a report on Surrealism. The paragraphs are out of order. Draw a line to match the paragraph with the stage of the report (on the left) then correct the punctuation.



Book cover 'La Limite', S. Dali, 1951.

CC0. The Metropolitan Museum of Art, New York, www.metmuseum.org.

Identify style / movement

Description

history and influences

features

significance

surrealism began with contemporary art movements in paris during world war I (1914-1918), including dada-ism surrealist artists included guillaume apollinaire, andre breton, max ernst and salvador dali. surrealism was a significant artistic and intellectual movement through most of the twentieth century

surrealism is a 20th century art movement that explored the power of the unconscious and irrational mind surrealism was a movement in visual arts as well as literature, film and theatre

surrealism was one of the most influential art movements of the twentieth century the influence of surrealism is still found in postmodern and contemporary art styles in fact any art that explores imagination can be found to be influenced by surrealism

surrealist artworks often show everyday objects in illogical, dreamlike and bizarre ways the imagery can be disturbing and surprising this can involve juxtaposition (placing together) of objects that do not usually go together (such as lips and butterflies in the dali image on this page), giving unreal qualities to common objects (such as a butterfly with human eyes) as well as images of decay and violence surrealist images are designed to inspire the imagination and to reveal the madness of the modern world